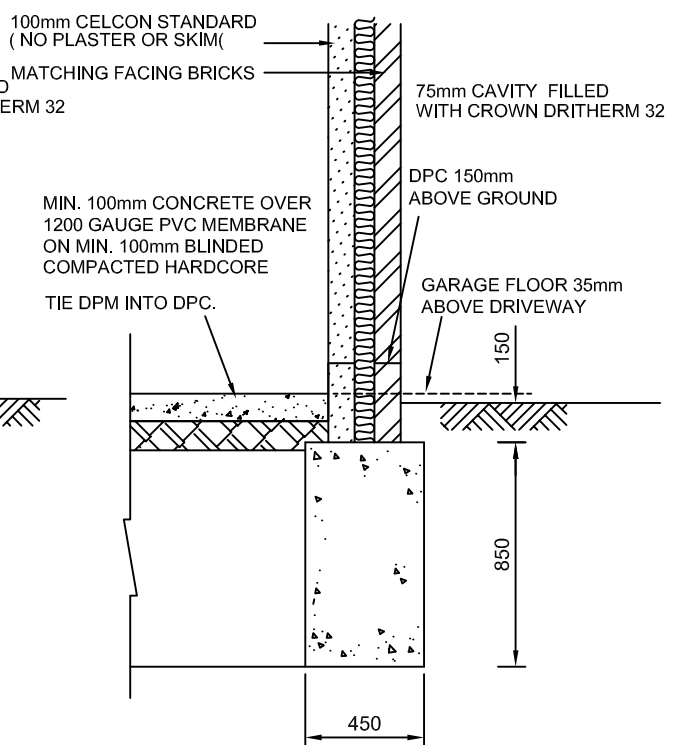
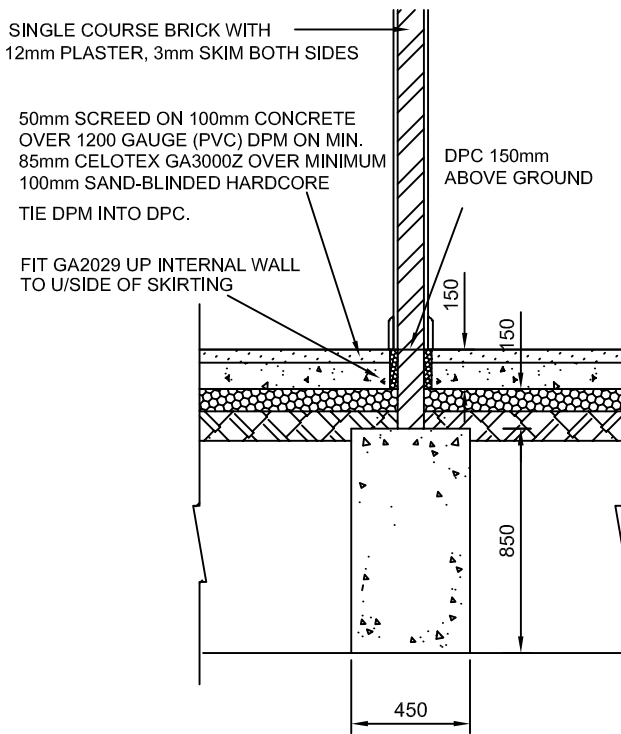


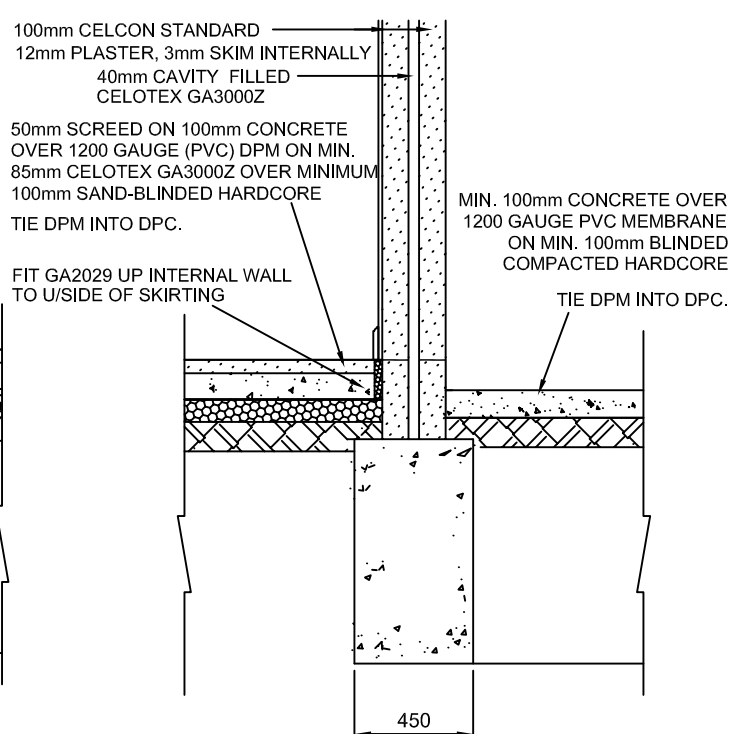
SECTION A-A



SECTION B-B



SECTION C-C



SECTION D-D

NOTE: FIT 10mm FLEXCELL AT JUNCTION BETWEEN NEW AND EXISTING FOUNDATIONS

FOUNDATIONS, WALLS & FLOOR DETAIL 1:25

(FOR PERIMETER/AREA = 0.60)